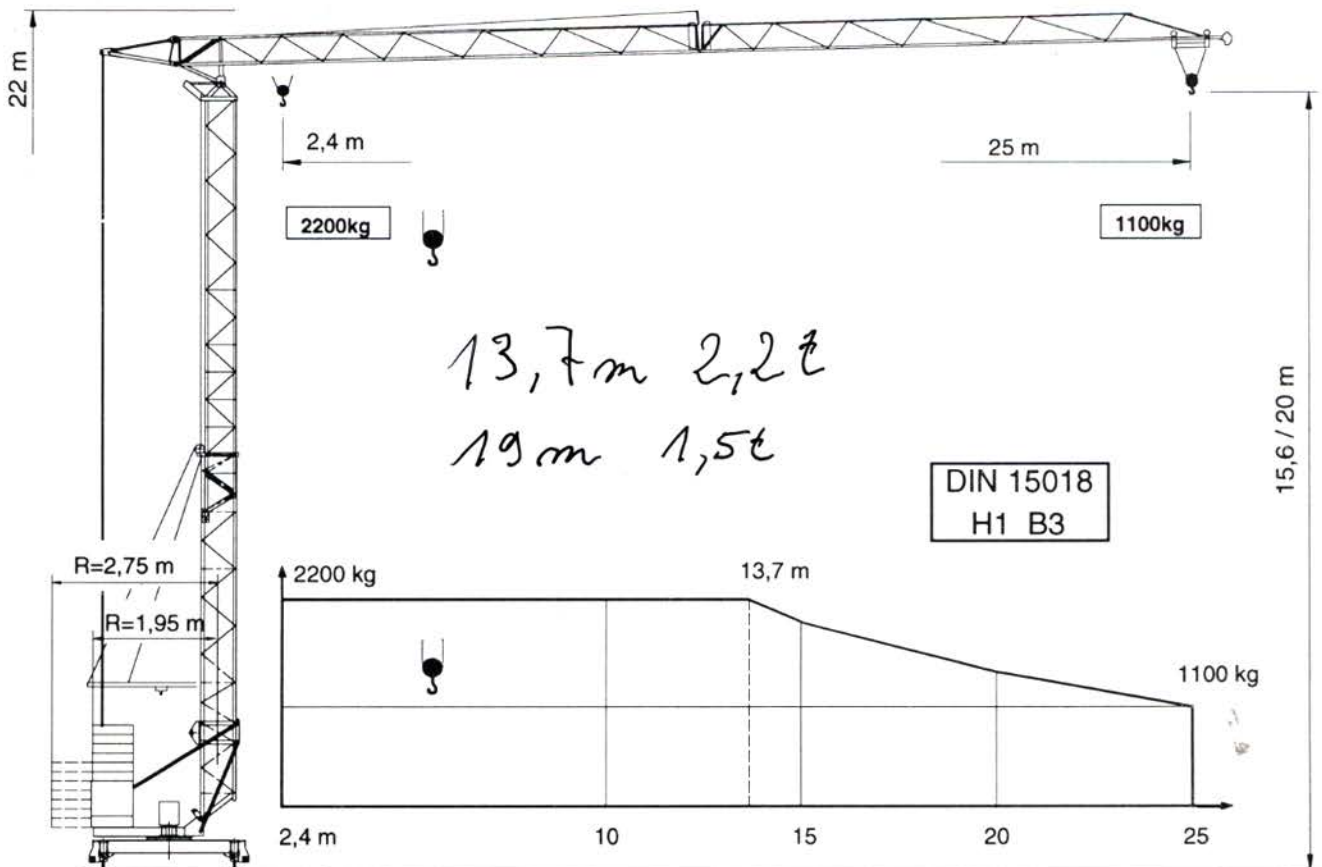
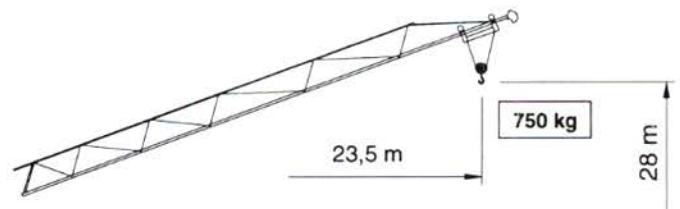


PEINER Schnellmontagekran SMK 202
Fast self erecting tower crane
Grue à montage rapide

Max. Tragfähigkeit Lifting capacity Force de levage	2,2 t
Max. Ausladung Radius Portée	25,0 m
Max. Nutzlastmoment Load moment Couple de charge utile	295 kNm

20° Steilstellung

"City- Kran"



PEINER Schnellmontagekran

Fast self erecting tower crane









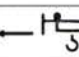

Grue à montage rapide

SMK 202

Form 25 (BGL)

City-Kran

Geschwindigkeiten / Speeds / Vitesses

Type	S				Steilstellung / jib-inclination / position rapide S				Motorleistung Power Puissance KW
			m/min	kg			10°	kg	
PU 8/2			40	1100			10°	850	7,5
			20	2200			20°	750	
			5,0 m/min						
KL 1/3			v = 30 m/min.						3,0
DIEO / 30			n = 0 → 0,9 min ⁻¹						2,2
380 V / 50 Hz / 3 Ph		Anschlußleistung / Connected power / Puissance installée						~ 13 KW	

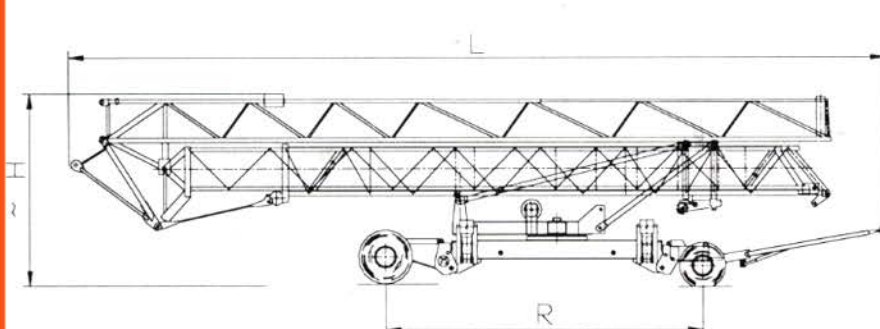
Gewichte und Maße / Weights and sizes / Poids et mesures

Konstruktionsgewicht			Standard	City-Ausf.	Kabine Sichthöhe		
Construction weight			= 8 300		Height of sight from drivers cabin	m	~ 10
Poids de construction					Hauteur de vue de la cabine		
Gegengewicht	D	kg	14000	18600	Kabelquerschnitt		
Counter weight	CH	kg	15100	19800	Cable cross section	mm ²	4 x 6
Contre-poids					Section du câble		
max. Eckdruck	D	KN	111	136			
max. wheel load	CH	KN	109	137			
Pression max. par galot							
Spurweite / Radstand			3,2 / 3,2				
Track gauge / weel gauge							
Ecartement de voie / Empâtement							
Drehradius							
Radius of rotation			2,75	1,95			
Rayon de rotation							

Straßentransport mit KSL

Road transport with KSL

Transport en route avec KSL



mit Teilballast 4,6 to
straßenfahrbar

[m]	KSL 14/1	KSL 20/1
B	2,5	2,5
L	14,7	14,6
H	3,7	3,7
R	5,38	5,63

Unsere Vertretung:

Our representative:

Notre représentant: