

PEINER

Schnellaufbaukran SMK 201

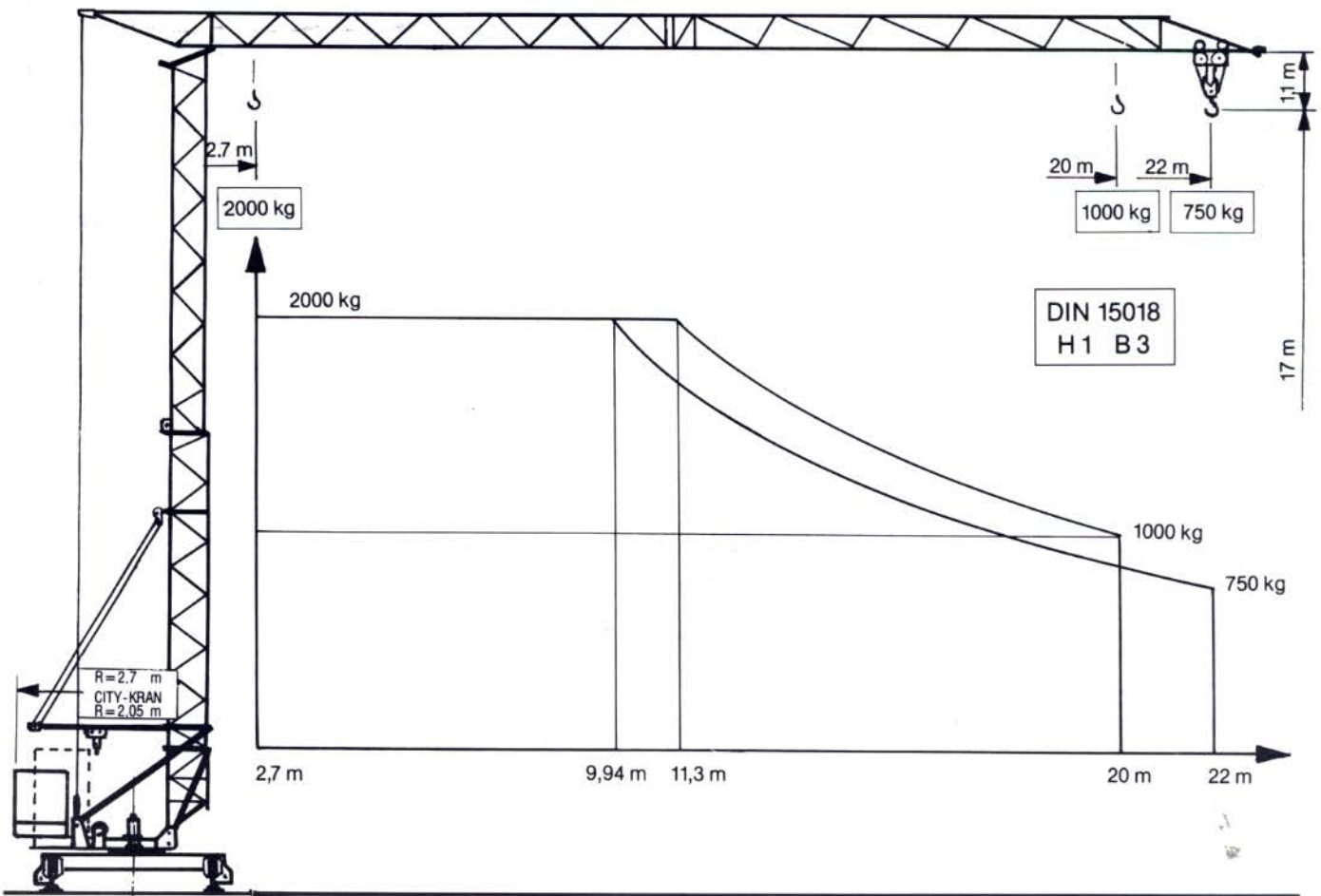
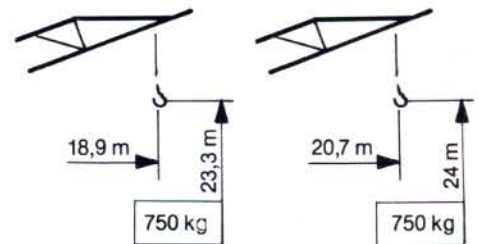
Fast self erecting tower crane

Grue à montage rapide

Max. Tragfähigkeit Lifting capacity Force de levage	2000 kg
Max. Ausladung Radius Portée	22 m
Max. Nutzlastmoment Load moment Couple de charge utile	226 kNm

“City-Kran”

Steilstellung 20°



Peiner Schnellaufbaukran

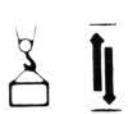

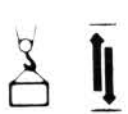




Peiner fast self erecting tower crane

Grue Peiner à montage rapide

SMK 201

Form 20

Geschwindigkeiten / speeds / Vitesses

Type			m/min. kg		Motor- Leistung Power Puissance KW
			40	1000	
HL3/1000			20	2000	PU 7,5
			5 m/min.		
KL 1/2			v = 30 m/min.		0,9
KL 1/3			v = 30 m/min. (Steilstellung 20°)		(1,8)
DIEO / 20			n = 0 → 0,9 min ⁻¹		SRA-System 1,0
380 V / 50 Hz / 3 Ph			Anschlußwert / connection power / Puissance installée		10,5

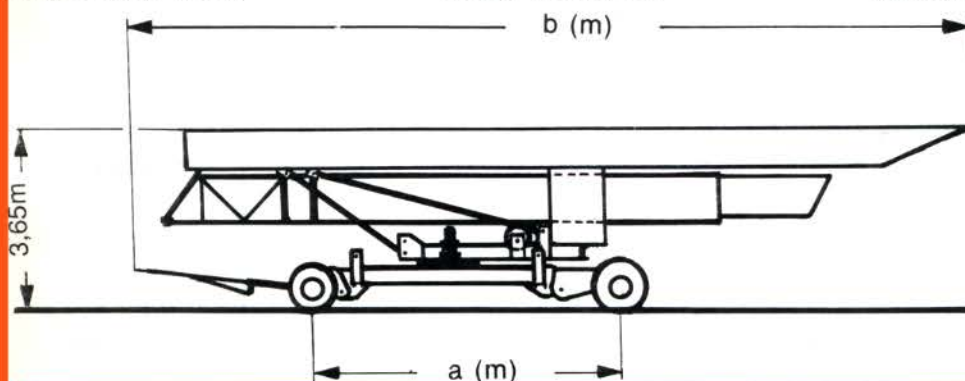
Gewichte + Maße / weights and sizes / Poids et mesures

Konstruktionsgewicht Construction weight Poids de construction	kg	Standard- City-Ausf.			
		6400			
Gegengewicht Counterweight Contre-poids	kg	(D)8300 —	Zentralball. = 2400 + 10150 (D u. CH)	Kabeltrommel (Fahrweg) Cable winder (length of track) Enrouler (longueur de voie)	m 40
max. Eckdruck max. wheel load Pression max. par galot	KN	95		Kabelquerschnitt Cable cross section Section du câble	mm ² 4 x 6
Spurweite / Radstand track gauge / wheel gauge Ecartement de voie / Empâtement	m	3,6 / 3,6		Steuerkabel Control cable Câble de commande	m 15
Drehradius Radius of rotation Rayon de rotation	m	2,7	2,05	Schienenprofil Rail profile Rail profil	S33/S49

Straßentransport

Road transport

Transport en route



	Standard- Teilballast	City-Ausf. Teilballast	b
	a	a	
KSL 14/1	5,78	5,78	14,60
KSL 20/1	Vollballast 6,03	Teilballast	14,40

Unsere Vertretung:
Our representative:
Notre représentant: